

www.cimco-software.com

CIMCO SOFTWARE

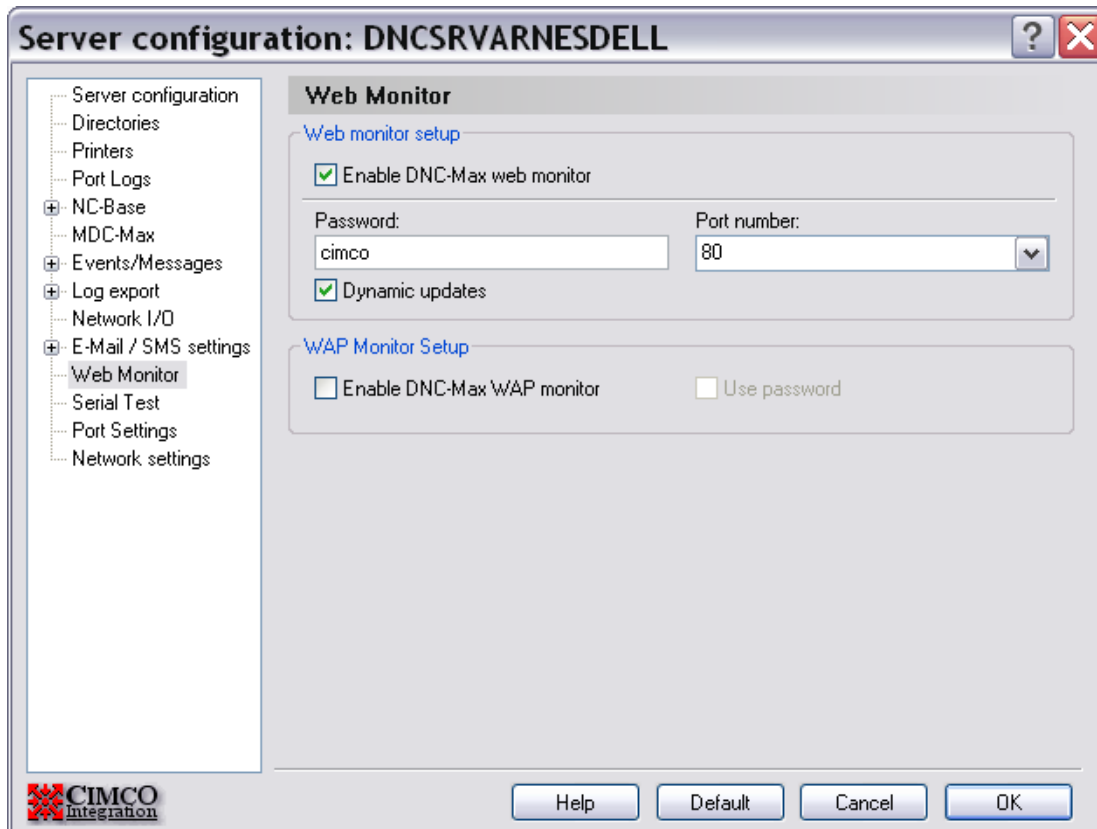
ACTIVATING DNC-MAX WEBMONITORING

TECHNICAL INFORMATION



Aktivating the DNC-Max Web Monitoring.

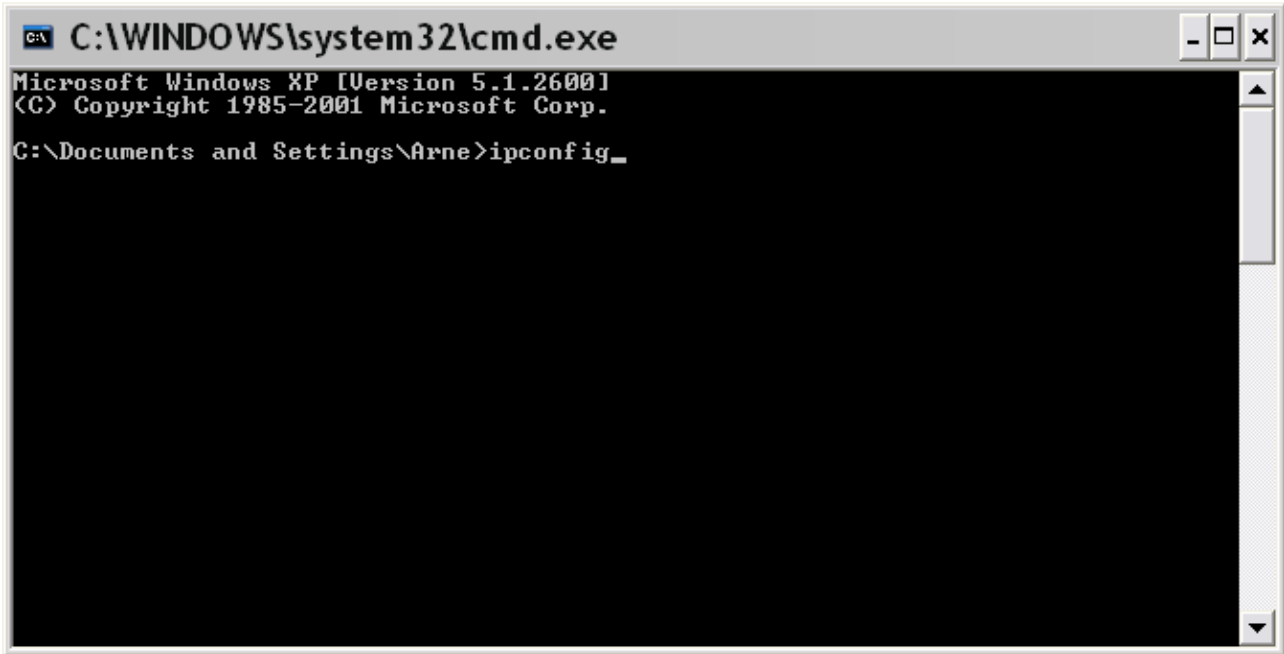
1. Start DNC-Max Server
2. Menu: Setup > Configure server > Web Monitor



DNC-Max server: Web Monitor

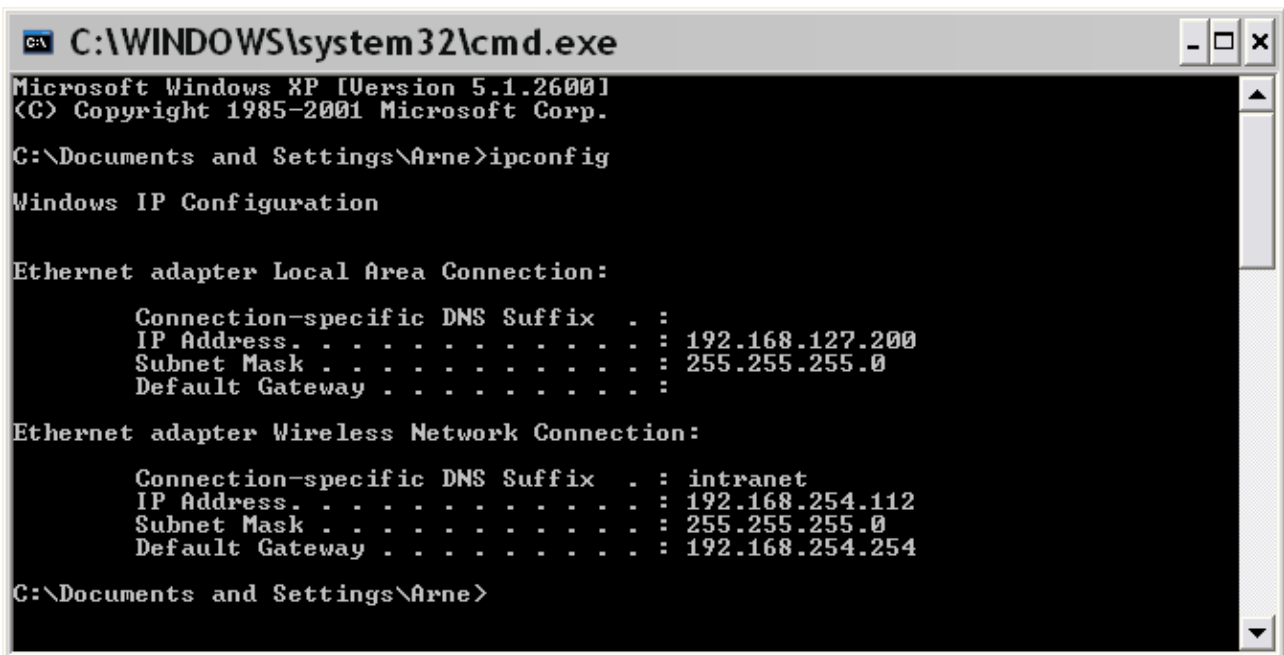
Aktiviate Enable DNC-Max web monitor. Type a password of your choice.
In this case we chose "cimco"

Then click OK. Go to the Windows Task Bar and click on Start, then click Run.
Type cmd and click OK.



Windows command prompt

Type ipconfig and press **Enter**



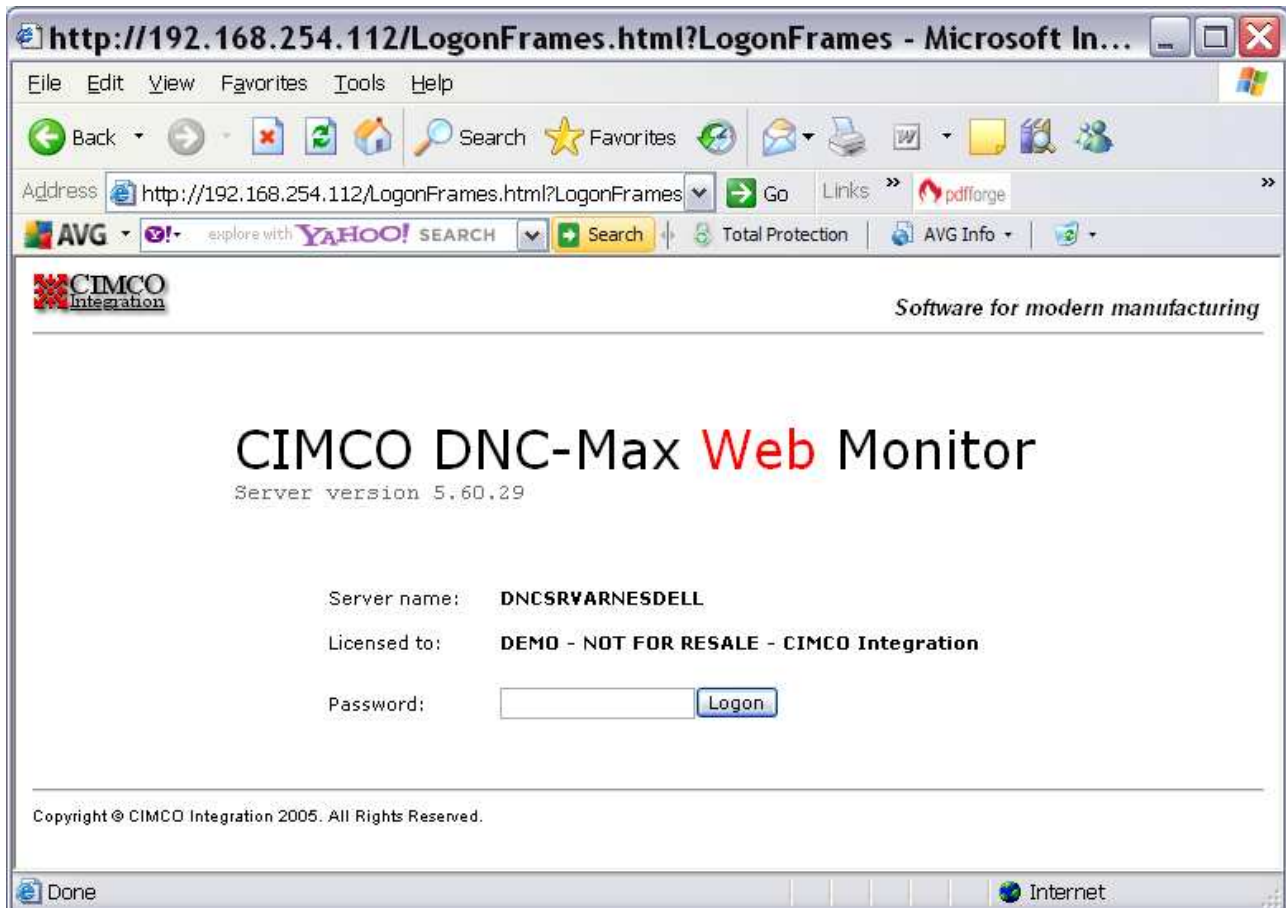
Ethernet adapter Wireless Network connection show the IP Address of the PC where DNC-Max is installed (192.168.254.112).

Notice: On this PC the Ethernet adapter Local Area Connection show a local IP Address only used for service.

T

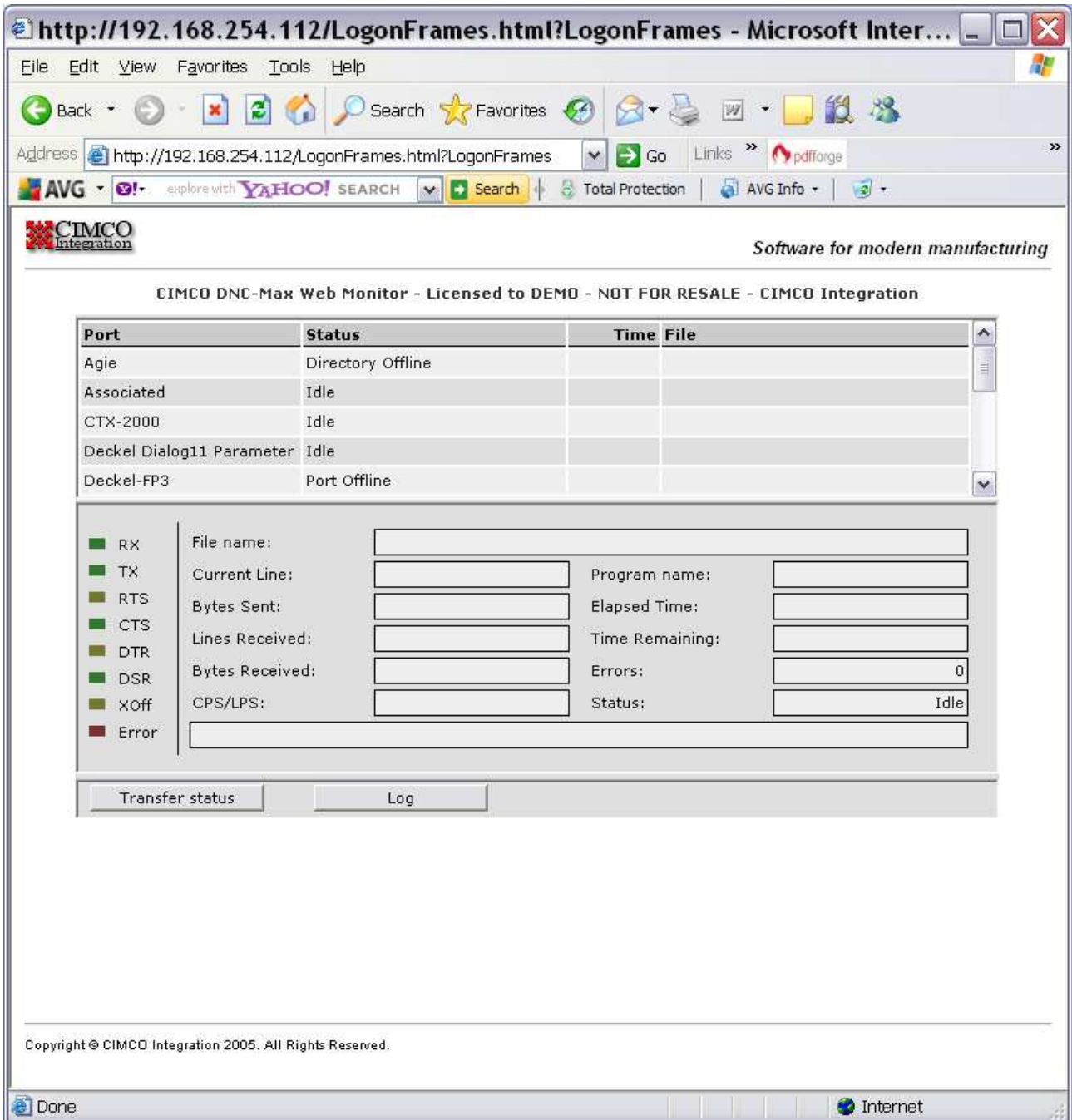
Now go to the PC from where you want to monitor via the web, and start the Internet browser.

Type in the IP Address and port no. of the DNC-Max Server, in this case `http://192.168.254.7:80`, and press enter.



DNC-Max Web Monitor.

Type in the password, in this case "cimco". Click Logon.



CIMCO Integration *Software for modern manufacturing*

CIMCO DNC-Max Web Monitor - Licensed to DEMO - NOT FOR RESALE - CIMCO Integration

Port	Status	Time	File
Agie	Directory Offline		
Associated	Idle		
CTX-2000	Idle		
Deckel Dialog11 Parameter	Idle		
Deckel-FP3	Port Offline		

<input type="checkbox"/> RX	File name:	<input type="text"/>	
<input type="checkbox"/> TX	Current Line:	<input type="text"/>	Program name: <input type="text"/>
<input type="checkbox"/> RTS	Bytes Sent:	<input type="text"/>	Elapsed Time: <input type="text"/>
<input type="checkbox"/> CTS	Lines Received:	<input type="text"/>	Time Remaining: <input type="text"/>
<input type="checkbox"/> DTR	Bytes Received:	<input type="text"/>	Errors: <input type="text" value="0"/>
<input type="checkbox"/> DSR	CPS/LPS:	<input type="text"/>	Status: <input type="text" value="Idle"/>
<input type="checkbox"/> XOff			
<input type="checkbox"/> Error			

Copyright © CIMCO Integration 2005. All Rights Reserved.

DNC-Max Web Monitor.

CIMCO Integration

