



Edit 4

The Complete CNC Editor

CIMCO Edit has been distributed to over 75,000+ CNC programmers worldwide with the number growing daily. The reason why CIMCO Edit is so popular is simple; it is fast, easy-to-use, and offers all the features you expect in an editor.

Native 32bit Editor designed specifically for Windows 9x, Windows NT4, 2000 and XP, supports all standard Windows features. Developed using industry standard Microsoft Visual C++. Architecture allows editing of immense CNC programs.

Highly customisable editing environment for each type of CNC control with user definable machine parameters for math operations, File Compare, line/block numbering, formatting, and Open-GL backplot. The user can customise toolbars and global system functionality.

256 Character File Names are fully supported. No more DOS 8.3 limitations. User defined file types can be easily added by file extension to the operating system Registry, allowing double clicking in your favourite File Manager or Windows Explorer for editing or printing the files.

Context Sensitive Help - just press "F1" for Help Topics tied to each feature and dialog.

User definable color schemes for different CNC templates makes editing quicker and easier. Use the supplied color schemes or create your own.

Re-numbering allows the re-sequencing / addition / removal of block numbers to an entire file or a highlighted section.

Auto Spacing inserts spaces between CNC code registers for easier editing. Quickly add spaces back into CNC programs received from machine tools typically stripped during output.

Full printing capabilities with print preview and formatted output. Supports ISO printing of file path, file name, and time/date stamp on each output page at the location of your choice.

File Compare quickly shows all of the changes between different revisions of CNC programs. Edited programs can be compared back to the original CAM generated program for easy analysis of "as-designed" vs. "as manufactured" files.

Integrated 2D/3D Back-plotting displays 3 axis milling and 2 axis turning CNC programs and graphic wire frame tool path together. Edit the CNC program and the plot automatically updates! Graphics are supported using OpenGL standards with dynamic zoom, pan, and rotation. No fumbling with the keyboard either. Zoom, pan, and rotate can be performed with a 3-button- or wheel button mouse. Best of all, you can plot your programs in forward and reverse and in step or continuous mode.

Download a demo copy today and see why CIMCO Edit is the most popular CNC Editor on the market.



DNC4 -Max4



The Complete DNC Communication Solution

DNC-Max provides companies with a complete DNC solution including unmatched Remote Request, Client/Server, Advanced communications, and Activity Logging Capabilities.

DNC-Max was designed from the ground up for reliability, stability, flexibility, and performance. Which is why educated manufacturers choose DNC-Max over the competition. What makes them choose DNC-Max? The answer lies in the details. A professional grade DNC solution has to deliver in the following areas:

- CNC Compatibility
- Communications Hardware Compatibility
- CNC Program Compatibility
- Ease-of-use and Administration
- Flexible Auto-receive and Remote Request
- Transfer Reports
- Web Monitoring
- Messaging
- Data Collection

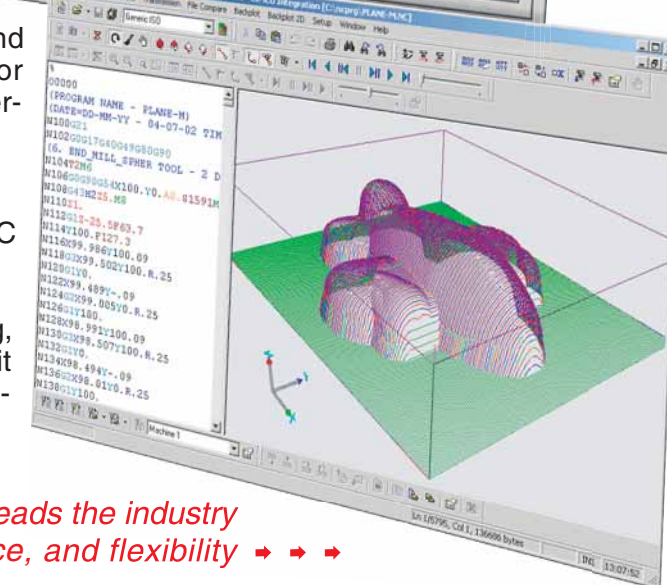
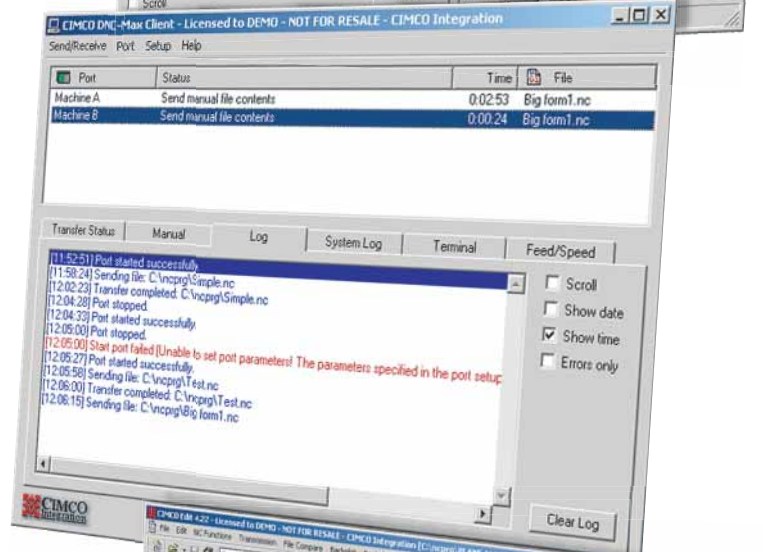
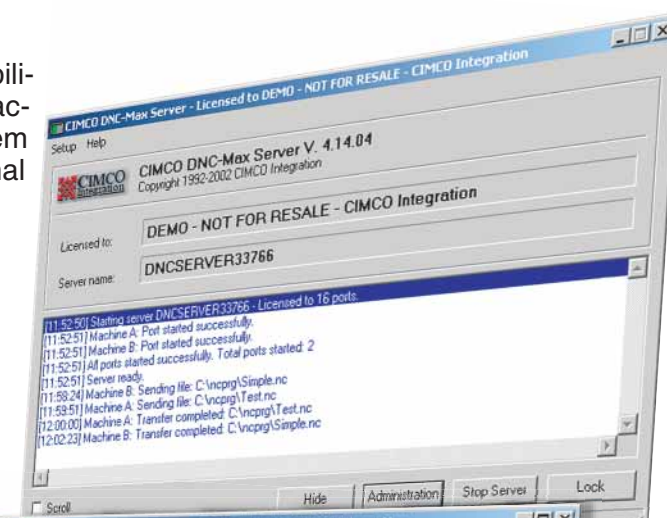
DNC-Max consists of two primary application components:

DNC-Max Server is the DNC engine responsible for all communications related activities. Users can choose to run DNC-Max Server as a Service or as an application. This is the core component of DNC-Max.

DNC-Max Client is the software application used for local or remote file transfer initiation, port monitoring, and port management. The DNC-Max Client can access one or more DNC-Max Servers across a LAN, WAN, or even the Internet.

DNC-Max can also be purchased including a powerful CNC program editor:

CIMCO Edit is the CNC program editing software for editing, comparing and back-plotting your CNC programs. CIMCO Edit can be purchased as part of DNC-Max or separately for programming workstations or shop floor PCs.



Reseller



CIMCO Integration
Virumvej 28, DK-2830, Virum, Denmark
Phone +45 45 85 60 50, Fax +45 45 85 60 53
www.cimco-software.com, info@cimco-software.com

Europe

North America

50 Leominster Rd., Suite 14, Sterling, MA 01564, USA
Phone +1 978-728-0014, Fax +1 978-728-0013
www.cimco-integration.com, info@cimco-integration.com

Read on to see how DNC-Max leads the industry in innovation, performance, and flexibility → → →

CNC Compatibility

DNC-Max is a powerful tool for all your CNC communications needs. From our standard serial interface to our advanced serial and binary protocols DNC-Max is designed to be your complete DNC solution. In addition to typical FANUC/Yasnac/Mitsubishi style controls DNC-Max includes the most comprehensive support for Heidenhain, Mazak, Fagor, and Agie controls. DNC-Max even supports the Fanuc Filemate.

Hardware Compatibility

DNC-Max works with any off-the-shelf, industry standard RS232/serial communications hardware. Which means that a software/hardware solution can be tailored to meet your exact needs – leaving room for future expansion or working with existing legacy hardware. So, whether your system requires traditional card based solutions, Ethernet to serial hubs, or even wireless hardware – DNC-Max is the safe investment.

CNC File Compatibility

Whether you just started setting up your first system or you are replacing a large proprietary system, the DNC application you choose has to work with your data. DNC-Max has pre-transfer and post-transfer formatting capabilities that work around legacy NC programs, situations where editing your post processors is not feasible, and other situations where on-the-fly code formatting is desirable.

Ease of Use and Administration

With DNC-Max you don't have to compromise ease-of-use to get performance, flexibility, and reliability. File transfers, port monitoring, port configuration, and system administration is performed in a clean, intuitive interface. This is possible because of the system's intelligent design.

Flexible Auto-Receive and Remote Request

90% of the DNC systems purchased in the last three or four years have been purchased based on their ability to support some type of remote request or remote file transfer initiation. DNC-Max delivers with the most flexible auto-Receive and remote request capabilities on the market. Whether you are concerned about directory control (including support for multiple paths and/or sub-directories), flexible remote triggers, customizable formatting, or remote pause/stop/restart capabilities DNC-Max can handle the job.

Transfer Reports

For a remote-based DNC system to be truly effective there must be visibility into the system from the shop floor. Success and/or failure reports can be configured and formatted for any or all machines in the DNC-Max system.

Remote Administration

One of the many features that separate DNC-Max from the rest of the DNC programs on the market is our powerful Client/Server architecture. DNC-Max was designed with a separate Server application for handling the communications and activity logging operations of the system. A DNC-Max Client is used for local (on the DNC server PC) or remote file transfer initiation, port status monitoring, viewing of port and system logs, and port administration. The DNC-Max Client automatically recognizes all DNC-Max Servers on the LAN and can quickly be configured to access remote DNC-Max Servers across a WAN or even the Internet. Nothing approaches the power of the DNC-Max Client/Server functionality.

Web Monitoring™

This exclusive feature inside DNC-Max allows anyone with Internet Explorer 5.0 or higher to remotely monitor any DNC-Max Server from anywhere on a LAN, WAN, or over the Internet. Set-up is done in seconds and includes the ability to password protect access, and WAP support (for WAP enabled Digital Phones/Pagers/PDAs) for system administrators on the go. Web monitoring is ideal for companies who want to provide real-time visibility into the DNC-Max System without the cost or need for remote Clients.

Messaging

DNC-Max does e-mail. As an option you can purchase the DNC-Max Messaging Option and unlock a whole new level of feedback. This capability provides for user and group recipient management, e-mail formatting, and trigger configuration in a flash. Once your configuration is set e-mail can be initiated based on any system event. The system can even be configured to pass along operator messages from the shop floor. You will not find a more comprehensive, easy-to-use e-mail system in any other DNC product.

Data Collection

Everyone has a different definition of data collection for a DNC system so CIMCO did the research, talked to manufacturers, and asked them what they wanted. The result is an incredibly powerful, flexible, and easy-to-configure data collection and export option for DNC-Max. You simply pick any ODBC data source on the DNC-Max Server PC, specify file/table/worksheet name(s), and the information you want to collect. DNC-Max even allows you to create an unlimited number of user-definable data triggers and specify whether these are pager, operator, info, or error events. Best of all, DNC-Max supports both global and port specific configurations.

DNC-Max4

The DNC-Max Difference

To really appreciate the difference between DNC-Max and other RS232 applications you have to consider the details. Take a look at the features below to see how DNC-Max makes a difference:

Parametric System Configuration DNC-Max was designed to be as flexible as possible. Accordingly, features were added so common settings such as directories and paths, e-mail users and groups, log formats, and other system-wide settings are quickly configured or reconfigured, all inside the DNC-Max Server. Since the settings are global there is no need to reset such parameters for each machine configuration or at each DNC-Max Client. An example of the design's incredible functions is when you need to move all your CNC programs from one or more locations on file server or PC to another location. Inside DNC-Max the change is made in one place and persists throughout the system automatically.

Intelligent Port Configuration With DNC-Max you can fully test port configurations without leaving the software. DNC-Max is the only system to offer features such as Test Sets - integrated fields within our configuration dialogs that allow you to emulate remote requests, auto-Receive transfers, remote restarts, and more... This saves significant set-up time and lets you test changes without the guesswork.

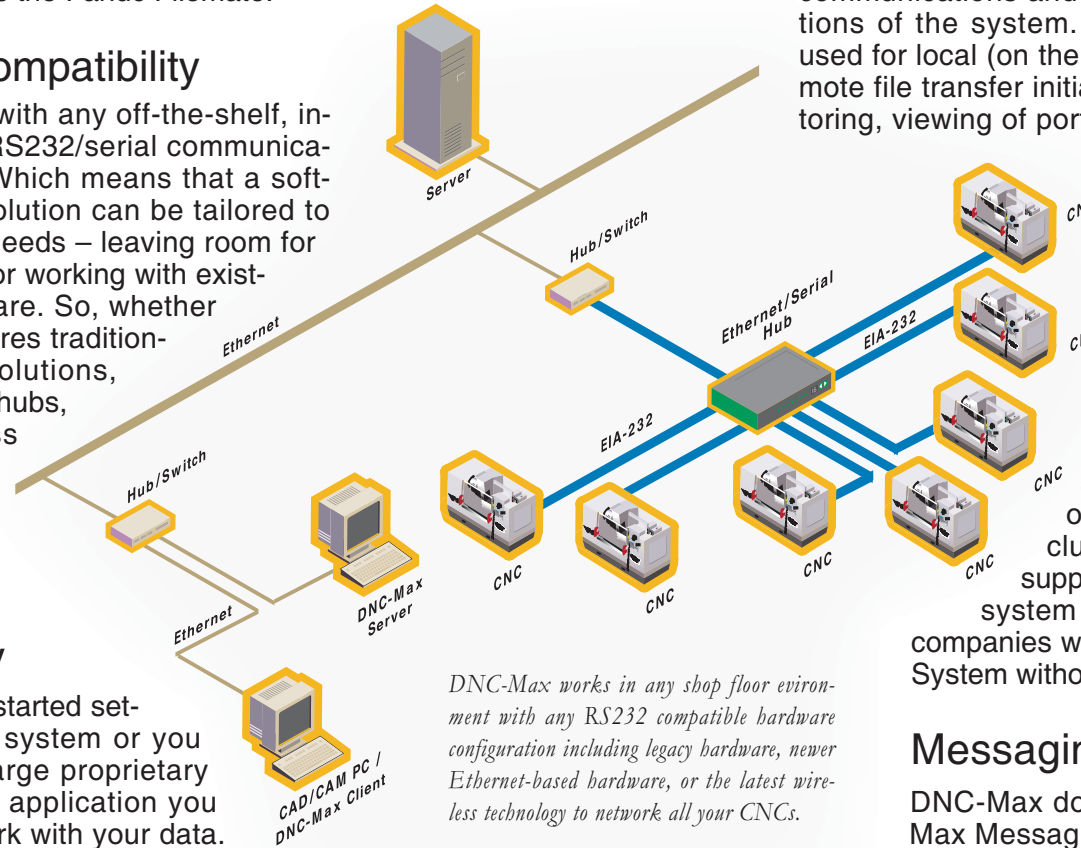
Fully Implemented Protocols

Unlike any other DNC application, DNC-Max fully supports special protocols such as Heidenhain, Mazatrol, and Fagor. By supporting all the options of each protocol the system provides for maximum flexibility and offers a better return on your CNC investment.

All dialogs within the DNC-Max system provide a clean, consistent interface for management and configuration.

Complete, context-sensitive help and tool tips are easily accessible from any screen.

Much, much more... There are so many powerful features designed into the system the only way to fully appreciate the possibilities is to see DNC-Max in action for yourself.



DNC-Max works in any shop floor environment with any RS232 compatible hardware configuration including legacy hardware, newer Ethernet-based hardware, or the latest wireless technology to network all your CNCs.

