

The Professional Choice for CNC COMMUNICATION

DNC-Max 5 is the latest version of the most trusted CNC communication software on the market. From its highly adaptable remote request and auto-receive to its advanced client/server architecture, DNC-Max continues to be the software solution-of-choice. DNC-Max provides end-to-end functionality designed to make every aspect of CNC communications more reliable and efficient.

CNC Compatibility

DNC-Max is designed to be the complete DNC solution for all your CNC equipment. In addition to standard Fanuc/Haas style controls DNC-Max includes the most comprehensive support for Heidenhain, Mazak, Fagor, etc.

Hardware Compatibility

DNC-Max works with off-the-shelf, industry standard RS-232 serial communications hardware, including Ethernet and Wireless serial device servers, traditional card based hardware, and existing legacy hardware.

CNC File Compatibility

Whether you set up your first system or you replace an existing system, the DNC application you choose must be compatible with your data. DNC-Max eliminates the need to update all your existing NC programs.

Ease of Use and Administration

File transfers, port monitoring and system administration are performed in a clean, intuitive client/server interface. This is part of the system's intelligent, solution driven design.

Port	Status	Time	File
Lathe Group			
↳ Okuma Lathe	Send manual file contents	0:01:17	D:\CNC-Data\...
Mill Group			
↳ Haas	Idle		
↳ Mori 1	Idle		
Tool Room			
↳ Agie Evolution	Idle		
↳ Haas Toolroom Mill	Receive auto file contents	0:00:21	LEFT-R44.nc

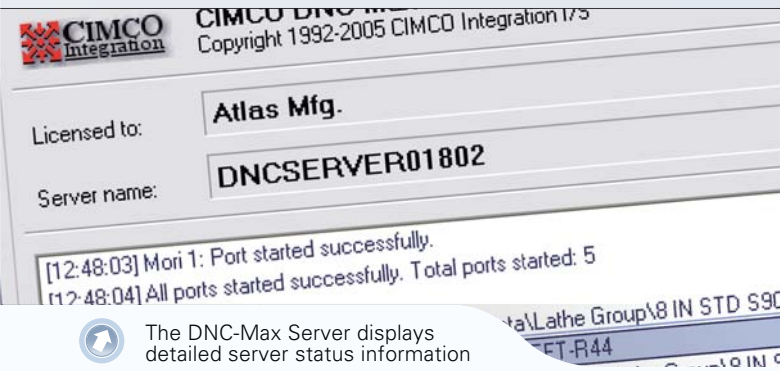
Monitor data while it is transmitted to your CNC machines

DNC-Max provides detailed status information

[12:48:02] Port started successfully
[12:49:05] Receiving program: LEFT-R44
[12:50:46] Existing file backed up: C:\TRAINING\CUSTOMER1\Haas Tool...
[12:50:46] Received file: C:\TRAINING\CUSTOMER1\Haas Tool...
[12:54:39] Sending file: C:\TRAINING\CUSTOMER1\Haas Tool...
[12:56:16] Transfer completed: C:\TRAINING\CUSTOMER1\Haas Tool...
[12:56:22] Receiving program: TRAY-P22
[12:57:07] Received file: C:\TRAINING\CUSTOMER1\Haas Tool...
[12:57:13] Receiving program: TRAY-P22
[12:57:41] Reception error. [Reception had 3 errors]

The Right Tool for the Job

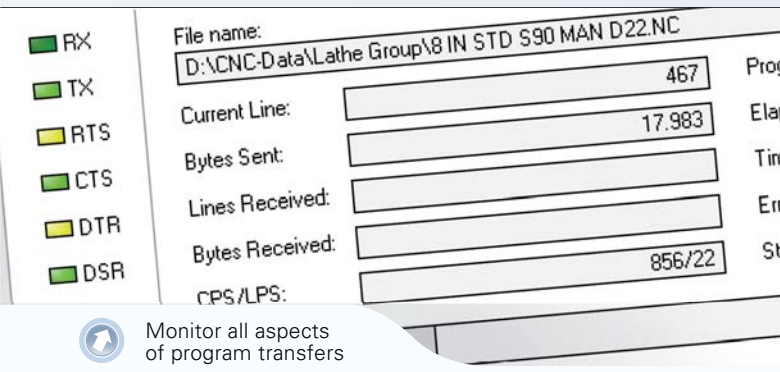
DNC-Max is the only choice for customers who demand performance, flexibility and reliability. Whether your solution is for a small shop with a few CNCs or a corporate solution for hundreds of machines in multiple remote facilities, DNC-Max is the proven solution.



The DNC-Max Server displays detailed server status information

The DNC-Max Server

The DNC-Max server is the DNC engine responsible for all communications related activities. Users can choose to run the DNC-Max Server as a service or as an application. This is the core component of DNC-Max.



Monitor all aspects of program transfers

Extending the Power of DNC-Max

DNC-Max integrates with CIMCO NC-Base™ for a complete CNC program management solution, and MDC-Max for machine data collection and shop floor monitoring.

System Requirements

- OS Windows 98 (clients only), Windows NT, Windows 2000, Windows XP, Server 2003.
- CPU Pentium II or greater.
- RAM 128Mb or more.

Reseller

Europe

CIMCO Integration
Lyngby, Copenhagen
Denmark

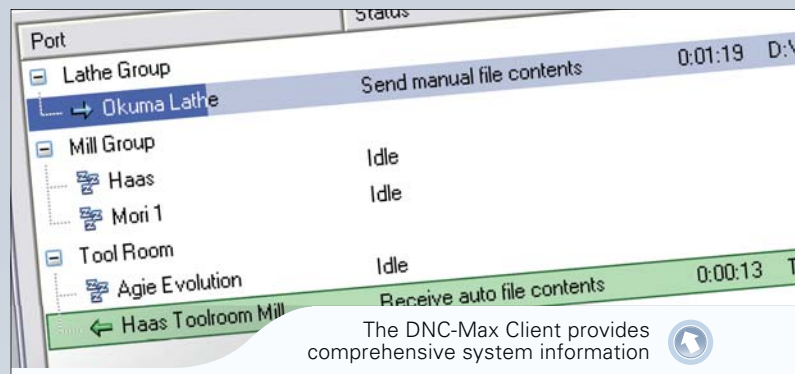
Tel: +45 45 85 60 50
Fax: +45 45 85 60 53

North America

CIMCO Integration
Oakboro, North Carolina
USA

Tel: +1 704 644 3587
Fax: +1 704 645 7162

Website www.cimco-software.com
E-mail info@cimco-software.com



The DNC-Max Client provides comprehensive system information

The DNC-Max Client

The DNC-Max client is the application used for local or remote file transfer, port monitoring and port management. The DNC-Max Client can access one or more DNC-Max Servers across a LAN, WAN or even the Internet.

New or Improved Features in DNC-Max 5

Global

- Windows XP™ User Interface
- Expanded Administration Capabilities
- Enhanced Remote Server Config
- License Server Support
- Remote CIMCO Support Client

The DNC-Max Server

- System Backup/Restore
- Serial Device Server Speed Booster
- Global Port Settings Export Utility
- Enhanced NC-Base™ Integration
- Enhanced Data Collection Support

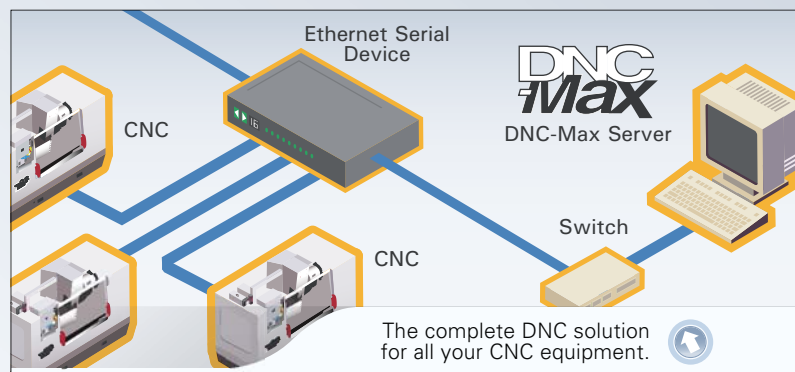
Protocols

- More Remote Request Options
- Directory Listing Wildcard Support
- More Directory List Formats/Filters
- Device Server Port Monitoring

The DNC-Max Client

- Improved UI Customization
- User Proximity UI Modes
- Port Group Configuration
- DAQ Device Setup and Configuration
- Improved Remote Server Access
- Updated Pocket PC Client

More than 100 other additions and enhancements...



The complete DNC solution for all your CNC equipment.