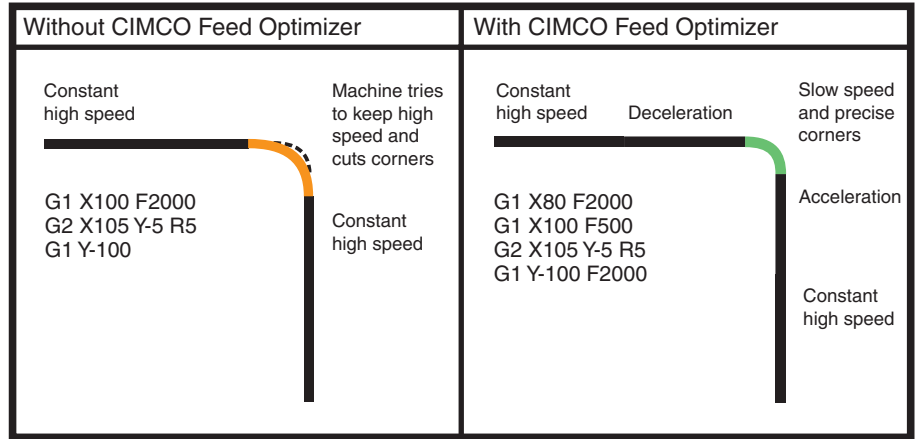


CIMCO

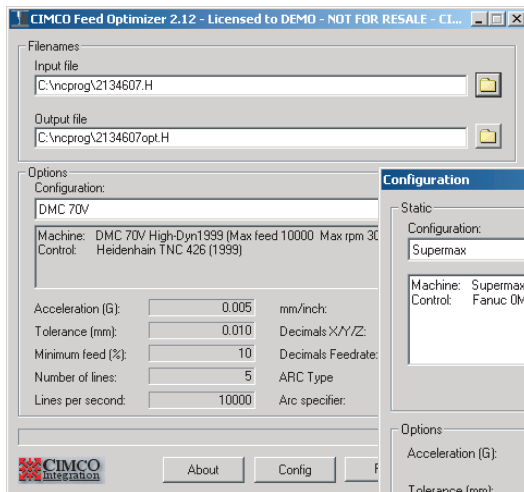
Feed Optimizer

Optimizes CNC programs for the machine dynamics

Feed reduction may not seem to be a good idea at first glance, but on older machines, operating at too high a feedrate will cause the machine to overtravel or 'cut corners' at corners and small arcs. The CIMCO Feed Optimizer checks the toolpath, and reduces the feedrate where necessary, in order to allow you to produce parts that are within tolerances, at the highest possible feedrate (i.e. produced in the shortest possible time).



This is done by lowering the feedrate when approaching sharp corners or small arcs, while maintaining a high feedrate across smooth areas, where the high feedrate will not cause overtravel or 'cut corners'.



- Only has to be configured for the machine once, then everything is fully automated.
- Optimizes for the highest possible feedrate, while still maintaining a preset machining tolerance, allowing you to produce more parts in the same time, than would be possible without the CIMCO Feed Optimizer.
- Also reduces the feedrate in 3D toolpaths, if the control would otherwise move in a 'stuttering' motion, without actually slowing down the time it takes to run the program (since the program cannot be run any faster than the control can process the blocks). This smoother motion reduces wear on the tool, guideways and ball screws, as well as producing a smoother finish on the part.

Reseller



CIMCO

Integration

Virumvej 28, DK-2830, Virum, Denmark
Phone +45 45 85 60 50, Fax +45 45 85 60 53
www.cimco-software.com, info@cimco-software.com

Europe

North
America

50 Leominster Rd., Suite 14, Sterling, MA 01564, USA
Phone +1 978-728-0014, Fax +1 978-728-0013
www.cimco-integration.com, info@cimco-integration.com