



DNC-MAX

DNC Communication
for CNCs, Robots, PLCs and more

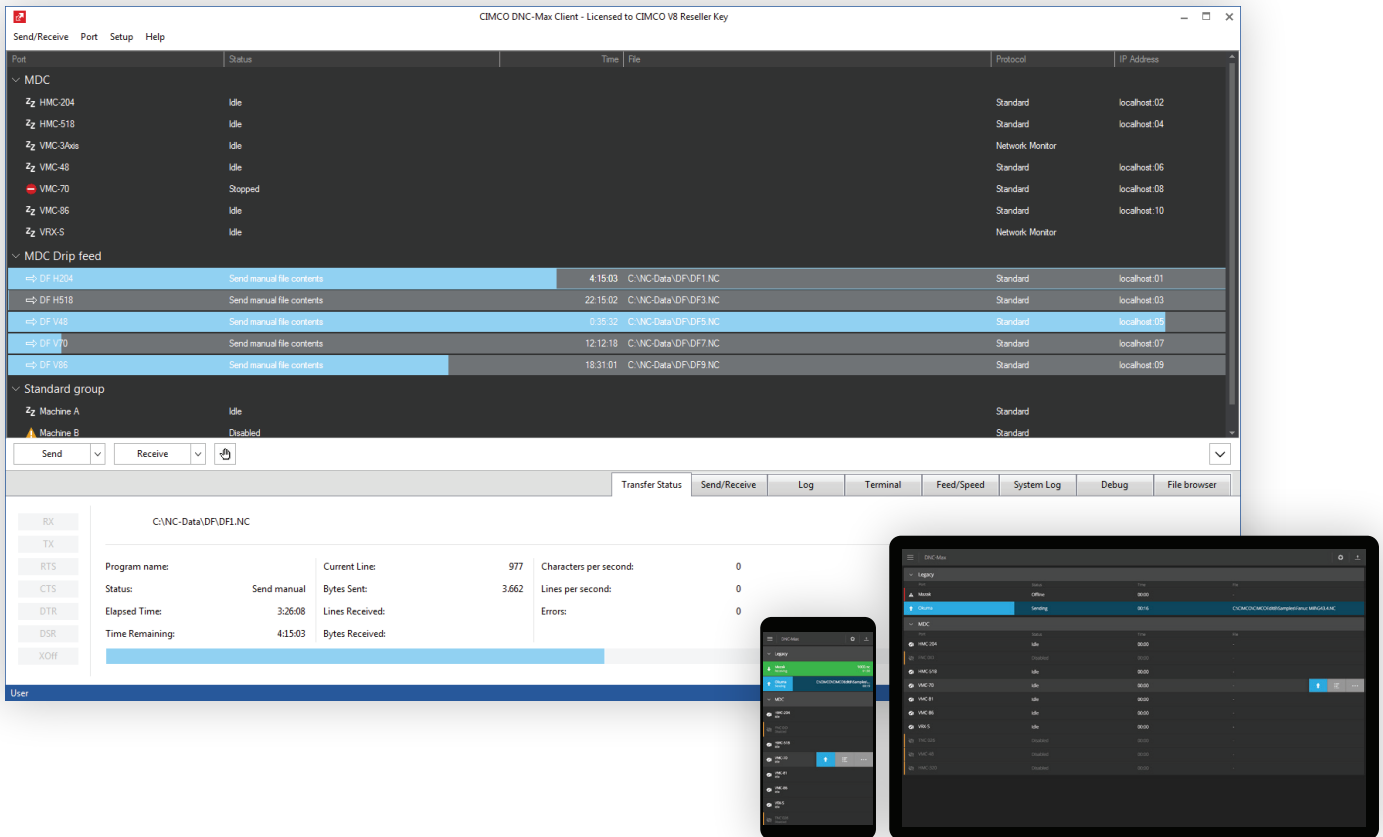


INTRODUCTION

What is CIMCO DNC-Max?

Provides full control over program transfers to all your manufacturing equipment from one central application

For over a decade CIMCO DNC-Max has been the leading DNC solution by which all others must be compared. From its best-in-class client/server architecture to its unmatched configurability and scalability. DNC-Max meets the requirement of both small shops and corporate enterprises with thousands of machines in multiple remote facilities.



BENEFITS

Why use CIMCO DNC-Max?



Network CNCs, PLCs & Robots

Network all your manufacturing equipment using industry standard hardware. Ethernet and WiFi device servers, traditional card based hardware, and existing legacy hardware.



Works with your files

Whether replacing an existing DNC system or setting up a new, the DNC application you choose must be compatible with your data. DNC-Max works with all your existing NC programs.



Access programs immediately

With DNC-Max there is no waiting. All your machines can download programs at the same time.



Download programs remotely

Reduce downtime from walking programs out to the shopfloor. Initiate downloads of programs directly from the CNC control, from a mobile device or Barcode reader.



Ease of use

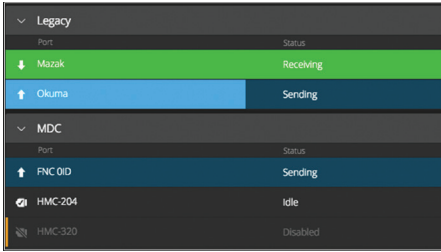
File transfers, port monitoring and system administration are all handled in a clean, intuitive client/server interface.

A scalable solution

DNC-Max can scale with your company's future needs such as expanding your system with manufacturing document management or machine data collection.

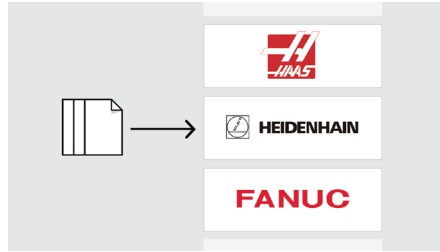
FEATURES

What is included?



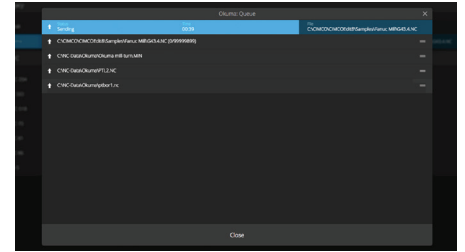
Ports, status and organization

Each port defines a machine connection and shows the current status of the port and machine. Organize ports in groups for optimal overview.



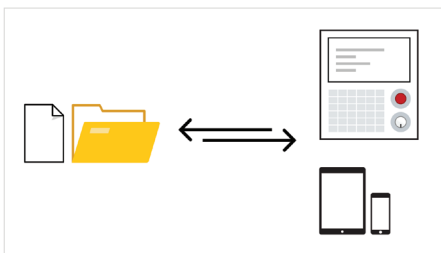
Network protocols

Standard and specialized network protocols for communication with most manufacturing equipment. Mazak, Deckel, Agie, Fagor, Brother, Modbus, and many more.



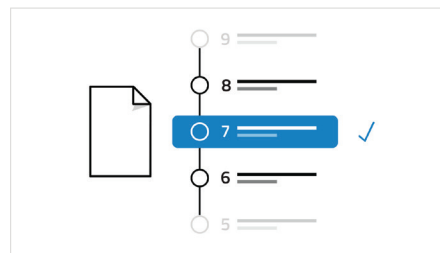
Send, receive and dripped

The 'Send Queue' ensures that files are transferred sequentially. Advanced options available for unlimited filesize dripped if supported by CNC.



Remote request

Request programs directly from the CNC control or using a mobile device and the DNC-Max Web Client. Supports DNC restart and file looping, directory support, directory prioritization, filters, wildcards, and more.



Versioning

Programs that are modified on the CNC control (or elsewhere) can be raised in version and stored in a quarantine area for review. Easily track changes and revert to previous versions.



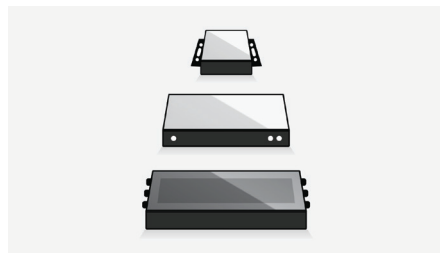
User access control

Control the level of access for users across the entire DNC-Max system. Limit configuration and control options to key personnel.



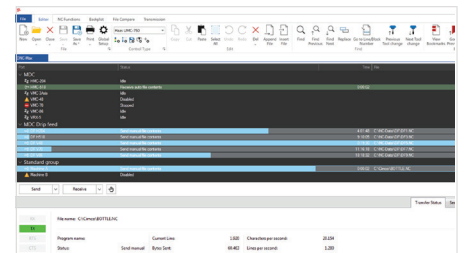
Logging and notifications

Real-time logging of DNC-Max system and machine activity. Auto-send status reports and notifications directly to CNC operators and key personnel.



CNC and hardware compatibility

Works with industry standard RS-232 serial hardware, Ethernet and Wireless serial device servers, traditional card based hardware, and existing legacy hardware.



Integration with CIMCO Edit

In addition to the stand-alone PC and Web Client, DNC-Max is also available as an integrated add-on for CIMCO Edit.

- ✓ Port configuration across servers
Manage multiple servers from DNC-Max across LAN, WAN, and Internet
- ✓ Predefined and custom port templates
Add custom ports or select from a large set of predefined connections
- ✓ FTP support
Communicate directly with machines that support Ethernet TCP/IP
- ✓ Parameter offsets
Offset parameters in your NC program before it is sent to the machine

AND MORE

www.cimco.com →

Visit our website to discover many more features, videos or to download our free, 30 day trial version of CIMCO DNC-Max.



CIMCO is a leading developer of software and solutions for Computer Integrated Manufacturing including advanced CNC-Editors, DNC software for reliable CNC communication, Manufacturing Data Collection for real-time monitoring and analysis of shop floor productivity, and Manufacturing Data Management for managing, organizing and securely storing production related data.

Since 1991, CIMCO has helped companies worldwide improve their competitive edge by providing reliable software and outstanding on-site assistance. Our network of CAD/CAM/CNC resellers and consultants have sold more than 100,000 licenses worldwide and we hold great pride in continuously supporting and meeting our customers' demands by developing intelligent and competitive solutions.

MICROSOFT, MICROSOFT OFFICE, MICROSOFT EXCEL AND OTHER MICROSOFT PRODUCTS ARE REGISTERED TRADEMARKS OF MICROSOFT, INC. FURTHERMORE, CIMCO MDM DOES NOT INCLUDE A LICENSE FOR MICROSOFT OFFICE. IN ORDER TO OPEN FILES EXPORTED IN XLSX OR XLS FORMAT, A LICENSE OF MICROSOFT EXCEL MUST BE PURCHASED SEPARATELY FROM MICROSOFT, INC.

MAIN OFFICES

DENMARK CIMCO A/S
 VERMUNDSGADE 38A
 COPENHAGEN, DENMARK
 TEL: +45 45 85 60 50
 FAX: +45 45 85 60 53
 EMAIL: info@cimco.com

AMERICAS CIMCO AMERICAS LLC
 1980 N ATLANTIC AVE STE 229
 COCOA BEACH, FL 32931
 TEL: +1 704 644 3587
 FAX: +1 704 943 0514
 EMAIL: infous@cimco.com

CIMCO HEADQUARTERS AND MAIN TRAINING FACILITY ARE LOCATED IN THE DANISH CAPITAL COPENHAGEN. THIS IS THE BASE OF OPERATION FOR THE SALES AND SUPPORT TEAM. OUR TECHNICAL SERVICE STAFF TRAVELS WORLDWIDE AND HAS LOCAL OFFICES IN SELECT COUNTRIES.

LOCAL OFFICES / RESELLERS WORLDWIDE

EUROPE

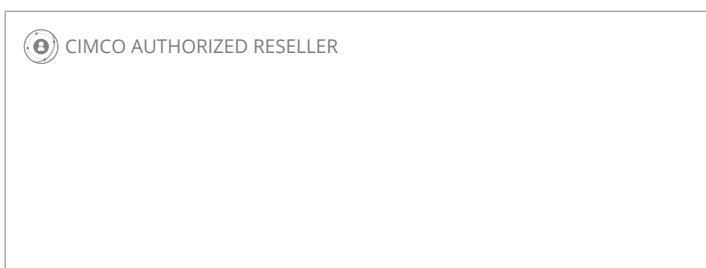
- | | | | |
|----------------|---------|-----------------------|----------------|
| AUSTRIA | FINLAND | NETHERLANDS | SLOVAKIA |
| BELARUS | FRANCE | NORWAY | SLOVENIA |
| BELGIUM | GERMANY | POLAND | SPAIN |
| BULGARIA | HUNGARY | PORTUGAL | SWEDEN |
| CROATIA | IRELAND | ROMANIA | SWITZERLAND |
| CZECH REPUBLIC | ISRAEL | RUSSIA | TURKEY |
| DENMARK | ITALY | SCOTLAND | UKRAINE |
| ESTONIA | LATVIA | SERBIA AND MONTENEGRO | UNITED KINGDOM |

SOUTH / NORTH AMERICA

- | | |
|------------|-----------|
| BRAZIL | USA |
| CANADA | VENEZUELA |
| CHILE | |
| COLOMBIA | |
| COSTA RICA | |
| ECUADOR | |
| MEXICO | |
| PERU | |

ASIA / MIDDLE EAST / OCEANIA

- | | |
|-------------|----------------------|
| AUSTRALIA | SINGAPORE |
| CHINA | SOUTH AFRICA |
| HONG KONG | SOUTH KOREA |
| INDIA | TAIWAN |
| INDONESIA | THAILAND |
| JAPAN | UNITED ARAB EMIRATES |
| MALAYSIA | VIETNAM |
| NEW ZEALAND | |



More information at www.cimco.com



Follow on Facebook [/cimco](https://www.facebook.com/cimco)



Watch our product videos at [/cimcovieo](https://www.youtube.com/cimcovieo)



Follow on LinkedIn [/company/cimco-a-s](https://www.linkedin.com/company/cimco-a-s)